



Happy Earth Day!



STREAM LINE

VOLUME 2, ISSUE 1
APRIL 14, 2006

A PUBLICATION OF THE **KINGS RIVER WATERSHED PARTNERSHIP**

ENDOWMENT FUND STARTED FOR KRWP

BY MIKE FITZPATRICK

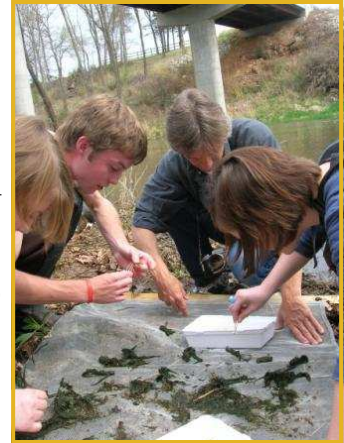
The Board of KRWP has recognized that there are three elements of our financial development. Membership dues bring in a thousand or so dollars each year, which is enough to pay for water testing chemicals, mailbox rental, a website and postage for the quarterly newsletter. If that is all we ever expect to accomplish, we could all coast along with warm fuzzy feelings.

The second element of financial need is to seek major funding for the big projects that the Kings Round Table identified last year. For these projects the KRWP is seeking grants, sponsorship and donations that will be specifically used for the tasks that are undertaken.

Element number three of the finance plan is the creation of an Endowment Fund through the Carroll County Community Foundation that will yield a modest, though steady income. CCCF is a local affiliate of the Arkansas Community Foundation. CCCF currently manages 25 permanent endowment funds

with assets close to \$1 million dollars. A permanent endowment will allow KRWP to eventually hire a full time employee, dedicated to the daily business of information collection, distribution, public awareness, community involvement and water quality protection. The Board launched the Endowment Fund with personal cash contributions of \$1500, and invites the membership at large to 'ride the wave'. Your endowment contributions are tax deductible and will be deposited into an interest-bearing account that will not be used for operating expenses. It is the commitment of this Board that endowment deposits will remain forever, growing over time, and yielding ever greater income so as to accomplish our aims of water quality protection.

Show your support for our dream of 'bottom-up' resident protection and control of our water resources. Make your check payable to 'KRWP Endowment Fund.' COME ON BIG MONEY!



Biology Can Be Fun!

Berryville High School Science Club students get wet while testing Osage Ck. See story on Page 2.

KINGS RIVER CLEAN-UP SLATED FOR MAY 6

Although we still haven't received the spring rains that everyone has been hoping for, there is still plenty to do on the Kings River...including clean it up. The KRWP will be hosting a spring clean-up on Saturday, May 6 beginning at 7:00 am. Interested folks can meet at Board member Mike Fitzpatrick's house on the Kings River. From Hwy 221 south of Berryville, simply follow the river clean-up signs. His house is located between Trigger Gap and the Rockhouse put-in. Following a full day of work, we will reconvene at Mike's house for a burger and bean cook-out, door prizes, and some good old fashioned hanging out.

We are going to need a lot of help from everyone to make this a successful work day. If you have a canoe, need to borrow a canoe, have a canoe trailer, flatbed trailer or pick-up, or can help with shuttles and cook-out, please let us know.

For more information contact Ray Warren at: 870-438-5049 or 870-654-4134 Email: rayandkaren@mynewroads.com.

Come float the Kings before the long dry summer months hit, and pick up a little trash along the way. Thank-you and we look forward to seeing you there!



KINGS RIVER
WATERSHED PARTNERSHIP

Ozark Natural Science Center gears up for exciting summer programs!

How can you ensure that your child's summer months are filled with action and adventure instead of endless hours of television and video games? One solution is to enroll them in a great summer camp program at the Ozark Natural Science Center, located in the rugged Ozark terrain of Bear Hollow Natural Area. ONSC has camps for children from 8-16, lasting about a week (less for the younger kids). These camps offer educational, innovative field programs designed to enhance the understanding, stewardship, and appreciation of the Ozark natural environment. Some activities include camping, hiking, canoeing, caving, swimming, species identification, arts & crafts, and much more.

Space is limited, so call today.
 (479) 789-2754
<http://onsc.uark.edu/>

WATER QUALITY MONITORING REPORT

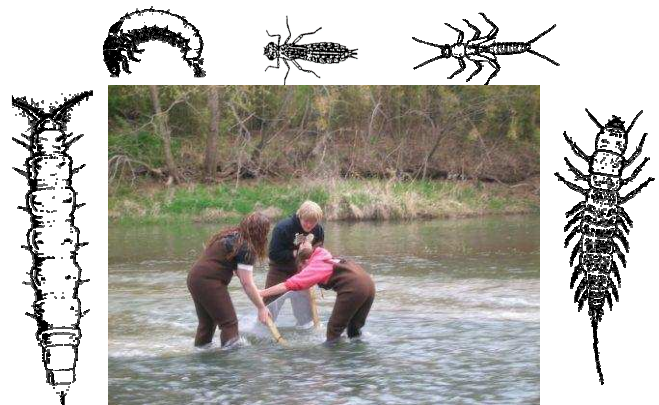
	Month	Stream Depth (ft)	Dissolved Oxygen (mg/L)	Nitrates (mg/L) NO ₃ -N	Phosphorus (mg/L) Reactive	Total Dissolved Solids (ppm)
Site 1- Upper Osage @ CR 705['] above Berryville	Dec	n/a	14.7	0.9	0.43	111
	Jan	1.08	13.7	1.3	0.16	112
	Feb	1.18	13.8	1.6	0.12	99
	March	1.40	14.2	1.3	0.09	64
Site 2- Lower Osage @ CR 306 below Berryville	Dec	0.48	12.8	0.7	0.33	272
	Jan	0.40	10.7	0.9	1.78	260
	Feb	0.70	16.5	0.9	0.27	182
	March	0.70	12.2	0.6	0.20	90
Site 3- Kings R. just above Osage confluence	Dec	0.30	11.6	0.7	0.29	110
	Jan	0.25	12.3	1.1	0.24	114
	Feb	0.47	11.3	0.7	0.14	113
	March	0.70	12.7	1.2	0.15	76
Site 4- Upper Kings, Hwy 74 bridge south of Kingston	Dec	0.63	12.7	1.5	0.54	46
	Jan	0.66	13.5	0.7	0.37	50
	Feb	0.69	16.5	1.9	0.3	35
	March	0.91	12.3	1.3	0.13	23
Site 5-Kings R. at Stoney Pt. below Grandview	Dec	0.75	13.3	1.2	0.2	169
	Jan	0.84	13.2	0.7	0.37	173
	Feb	0.65	11.1	0.5	n/a	150
	March	1.00	13.9	0.9	0.15	79
Site 10- Keel's Ck. .5 miles above Kings R. Confluence. CR 329	Dec	0.17	12.7	0.6	0.19	116
	Jan	n/a	n/a	n/a	n/a	n/a
	Feb	0.30	16.5	0.7	0.35	184
	March	0.33	10.4	0.9	0.11	161
Site 11-Kings R. at Rockhouse Access	Dec	0.20	11.4	0.8	0.3	127
	Jan	0.20	11.7	1.1	0.30	126
	Feb	0.22	12.3	1.1	0.21	105
	March	0.46	9.9	0.8	0.11	82

BERRYVILLE SCIENCE CLUB GETS WET ON THE OSAGE

The Berryville High School Science Club, sponsored by teachers Larry McCullough and Steve Poynter, briefly escaped from the classroom to test the waters of Osage Creek this past week. Shawna Miller and Sam Davis, environmental educators working with the Kings River Watershed Partnership (KRWP), presented a free program on factors that affect local streams in the watershed and the scientific measurement of stream water quality. Eleven students learned how to perform a series of chemical tests. The group also collected and identified living organisms from the stream bottom that can be used as indicators of stream conditions.

The combination of both chemical and biological testing gives a more comprehensive view of overall stream health. The chemical tests offer a snapshot of the quality of water at a given moment while the presence or absence of certain organisms offers a long-term picture of the health of a stream. Aquatic invertebrates are always in effect "sampling" the water quality. If there is pollution in a stream, only those organisms that are

more tolerant will survive. If we find invertebrates that are intolerant to pollution, we can safely say that there has no been significant pollution in that stream recently. Some aquatic insects live for a year or more, so we can tell the history of pollution in a stream by monitoring them. Shawna and Sam welcome the opportunity to present the program to other area schools. For more information, call Shawna at 479-981-1172.



ANNUAL MEETING BRINGS NEW BOARD MEMBER

The KRWP hosted approximately 70 folks for this year's annual meeting held in January.

Page Shurgar and Sam Davis were elected to fill a second term of three years as board members. Todd Summers, of Berryville, was elected to fill the Real Estate and Development position, taking the place of Duane Coatney. Mr. Coatney resigned the position in late 2005. Mr. Summers is a realtor with United Country Realty in Berryville. Board members can serve a maximum of two 3-year terms, after which they must take a one year hiatus before running for election again.

Brand new to this year's annual meeting were two awards presented by the Partnership. Susan Flake received the first Volunteer of the Year Award. Ms. Flake had been a water quality testing volunteer for one year through the best and worst of possible weather conditions. Her dedication has been most appreciated! The Swofford Family received the first Land Stewardship Award, presented by the Carroll County Conservation District. This family has done an excellent job of implementing practices that help protect the soil and water both on and off their farm.



Swofford Family & Mike Whitus

Photo by Alan Long

As always, the annual meeting includes a brief year in review of the Partnership's activities and accomplishments. 2005 included many exciting developments including:

- 1st Madison County public meeting
- 15 Roundtable meetings for watershed plan
- 85 water quality tests at 10 different sites
- Donation of office space at Grandview Hotel
- Grant from CCCF for karst model

Thank you to all of our members for your support.

Spring has Sprung and Nature is producing some of its finest shades of green....

How about giving up some green of your own?

Become a member and financial supporter of the KRWP today. Send \$20 and your name, phone number, and address to:

KRWP
P.O. Box 961
Berryville, AR
72616

ADEQ UNDERGOES TRIENNIAL REVIEW OF WATER STANDARDS

Section 303 of the Clean Water Act requires the Arkansas Department of Environmental Quality to review its water quality standards at least every three years, and if necessary modify them or adopt new standards. The last review concluded in April of 2004. Over the months of March and April, ADEQ held a series of seven public meetings around the state to receive feedback from Arkansas citizens for this review cycle.

ADEQ has chosen to focus the current review on topics involving Extraordinary Resource Waterways, a designation placed on approximately 16% of the state's waterways, including the Kings River. According to Section 2.302 (A) of Regulation No. 2, the ERW designation is defined as follows:

This beneficial use is a combination of the chemical, physical, and biological characteristics of a water body and its watershed which is characterized by scenic beauty, aesthetics, scientific values, broad scope recreation potential and intangible social values.

The KRWP would like to thank the Carroll Electric Cooperative for printing this newsletter free of charge. This publication would not be possible without their generous gift.

The current focus on ERWs stems from a request by the River Valley Regional Water District in Van Buren Arkansas to modify Section 2.304 of Regulation No. 2 to allow the building of dams on ERW designated streams. The District specifically desires to dam Lee Creek for use as a water supply, flood control storage, and lake recreation, but the modifications to the regulation could potentially impact the future of all ERWs in the state. The current regulation does allow the use of ERW streams for drinking water supply, provided that significant habitat alterations do not result. The use of weirs and offsite storage basins have made other ERW rivers available for use as a water supply while allowing the natural flow to continue.

Proposed regulation changes based on the triennial review and the final decision for the River Valley Regional Water District will occur in October. For more information or to comment visit the ADEQ website at www.adeq.state.ar.us/



Kings River
Watershed Partnership
Board of Directors

Ann Armstrong
Walter Karnes
Bill Ross
Sam Davis
Ray Warren
Page Shurgar
James Sanders
Todd Summers
Mike Fitzpatrick

The Kings River Watershed Partnership is a cooperative effort, organized exclusively for charitable, scientific, and educational purposes; more specifically to protect the health, purity, and economic viability of the Kings River watershed, now and for future generations.

Founded in 2001, the Partnership strives to represent a broad range of watershed stakeholders, primarily utilizing voluntary management improvements and collaborative agreements to protect and enhance water resources.

In October of 2004, the Kings River Watershed Partnership became a certified 501 (c)(3) non-profit organization. Feel free to give generously; your gifts are now tax-deductible!

Looking for more information?

Shawna Miller

Kings River Watershed Planner

Phone: (479) 981-1172

Email: kingsriver@earthlink.net



KINGS RIVER
WATERSHED PARTNERSHIP

P.O. Box 961
Berryville, AR
72616

SPRING SHOWERS BRING SOME RELIEF TO AREA RESIDENTS

For the first time since September of 2005, monthly rainfall in the watershed finally weighed in above normal levels. March brought a few welcome storms, record high and low temperatures, and 4.66 inches of rain. The southern portion of Arkansas has been experiencing heavy rain for the past three months, providing relief from the long drought of 2005. Unfortunately, most of these storms have eluded the parched northwest, leaving local residents and farmers scrambling for water.

Spring rains have slightly boosted the flow of the Kings River according to the USGS gauging station located near Grand-

view. The station shows that the Kings is currently (4/12/06) flowing at 286 cubic feet per second. With the exception of two days in September of 2005, the flow has not been above 200 cubic feet per second since May of 2005. April is usually an extremely wet month for Arkansans. Last year on this date the river was running at 2,150 ft³/s.

The drought has also had an effect on both reservoir levels in the area and groundwater supplies. Many locals claim that springs which have never been dry before are now dry as a bone. Please be considerate of your water use as we head into a potentially long, dry summer.